

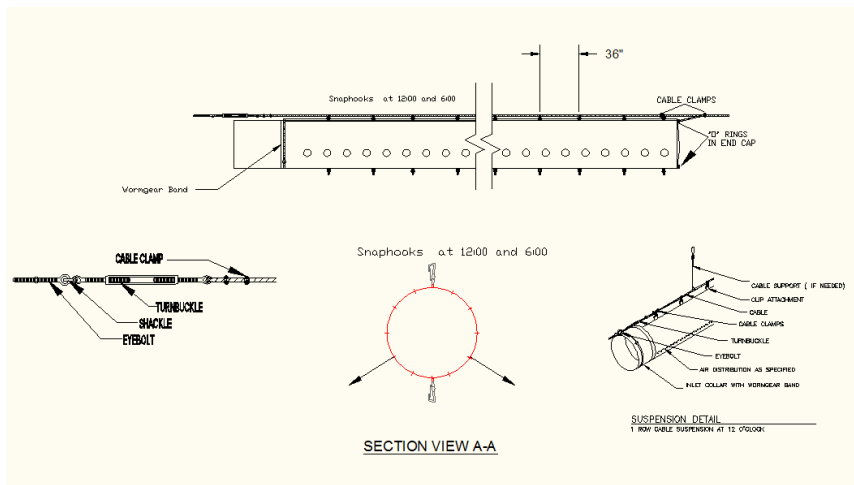
— PRE-ENGINEERED FABRIC AIR DIFFUSERS

ADC Inc. introduces a selection of pre-engineered ducts, which carry from 500 cfm to 8000 cfm in 25, 50, and 75 ft. lengths. These are pre-engineered for fans with ~.5" WG. External static pressure. Fabric air diffusers are designed to distribute air evenly over a large area. All diffusers are made from a rugged woven polyethylene coated fabric. Fabric is coated so the air is directed through the ports to where you need it. The size and number of ports are engineered.



DESIGN

All of the diffusers listed are designed to disperse air evenly from two rows of air jet ports. The ports are positioned at 4 & 8:00 and when the diffuser is rotated 180 degrees the ports would be located at 2 & 10:00. The Larger the air jet ports the greater the velocity away from the diffuser.



The Fabric diffusers listed below offer different five diameters and three lengths.

Part #	Dia.	Ft.	CFM-Range	Air-jet hole sizes		Price
				AJO's	CTRS	
FD1225	12	25	1000-1500	2.5	22.00	160.00
FD1250	12	50	1000-1500	2	30.00	281.00
FD1275	12	75	1000-1500	1.5	26.25	420.00
FD1525	15	25	1500-2500	3	21.75	172.00
FD1550	15	50	1500-2500	2	20.75	304.00
FD1575	15	75	1500-2500	1.5	16.25	456.00
FD1825	18	25	2500-3500	4	30.50	184.00
FD1850	18	50	2500-3500	2.5	21.75	328.00
FD1875	18	75	2500-3500	2	20.00	492.00
FD2425	24	25	3500-5000	4.5	22.00	215.00
FD2450	24	50	3500-5000	3	24.63	388.00
FD2475	24	75	3500-5000	2.5	23.50	576.00
FD3025	30	25	6500-8000	6	22.00	248.00
FD3050	30	50	6500-8000	4	21.75	434.00
FD3075	30	75	6500-8000	2	20.00	654.00

The Suspension hanging kits below are for 25', 50', and 75' diffusers

Part #	Ft.	Price
HK25	25	52.00
HK50	50	68.00
HK75	75	84.00

